

# NEAL COMMUNITIES

Where You Live Matters



COASTAL SERIES

*Verandah*®





# INCLUDED FEATURES

## COASTAL SERIES

**NEAL**COMMUNITIES

Where You Live Matters

### WHERE YOU LIVE MATTERS

- Over 50 years of building award-winning homes
- Over 100 successful communities and over 21,000 homes built
- Dedicated customer care team
- Personalized Neal Design Gallery selection session
- 10 year full structural warranty
- 1, 6 and 11 month warranty service inspections available
- 2 year mechanical warranty
- Highest customer care satisfaction rating

### COMMUNITY FEATURES

- Beautifully located private golf course community
- Set on the backdrop of the Orange River
- Full suite of amenities with full-service dining, social events, activities and clubs that create a true sense of community and belonging

### AWARD-WINNING DESIGN FEATURES

- Choice of custom-designed Spanish, French Colonial, and Island elevations
- Decorative architectural details and shutters per plan
- Designer -selected exterior color palettes
- Professionally designed landscape package
- Professional in-house design service
- Neal Design Gallery offers choices for personalization of your home
- Exterior textured wall finish with siding OR banding and accents per plan
- The proven quality, service, and integrity of Neal Communities

### LUXURY FEATURES

- Textured finish on walls and ceiling
- Classic colonial moldings
- 5-1/4" colonial baseboards
- Colonial windows in select locations
- Decorative coach lights
- Solid Surface window sills per plan
- Stylish lever door hardware with handle set at front entry
- Classic 2-panel interior doors
- Professionally landscaped home site including mulch and automatic irrigation system
- Spacious closets with ventilated shelving per plan
- Coffered ceiling in master bedroom (per plan)

- Plush, stain-resistant wall-to-wall carpeting in designer colors in areas per plan - Level 1 selections
- Long-lasting 17" ceramic tile floors in foyer, kitchen, baths and utility
- Air-conditioned laundry area with washer/dryer connections
- Painted garage floor
- Paver entry, walk, drive and lanai

### QUALITY KITCHEN FEATURES

- General Electric® appliance package in white or black:
  - 5-year General Electric warranty
  - Built-in wall oven/microwave combo
  - Gas cooktop with hood
  - Refrigerator
  - Dishwasher
- Moen® 1/2 HP disposal
- 42" upper Level 1 full overlay wood veneer cabinets with stylish hardware
- Cabinet crown molding and bumped cabinet at microwave/hood
- Granite countertops - choice of value colors
- Stainless steel undermount sink
- Chrome single-handle faucet
- Spacious pantry for additional storage per plan

### LUXURY BATH FEATURES

- Corian white countertops with integral sinks and eased edge in baths
- Ceramic tile walls and glass shower enclosure in master bath per plan
- Elongated white water closet
- Level 1 full overlay wood veneer cabinets with stylish hardware
- Privacy water closet in master bath per plan
- Full-width vanity mirrors
- Chrome 2-handle faucets
- Water resistant drywall in all wet areas
- Towel bars and paper holders per plan
- Designer vanity lights
- White freestanding tub in master bath per plan (not available in all plans)
- White tub in guest bath
- Deco mirrored medicine cabinets per plan
- Outside vented exhaust fans in all baths

### QUALITY CONSTRUCTION FEATURES

- Professionally-engineered structural components
- Concrete block construction
- Maintenance-free soffit and fascia
- Two conveniently located exterior hose bibs
- Steel storm panels per plan
- PEX water lines throughout
- Roof with concrete roof tiles
- Five-year exterior paint warranty
- Raised-panel overhead garage door with operator and remote controls, style per elevation

### ENERGY-SAVING FEATURES

- Insulated Low-E double glazed windows and sliding glass doors
- Natural gas piping per plan
- R-30 ceiling insulation
- Premium fiberglass insulated entry door with weather stripping
- Energy-efficient air conditioning system (SEER rating varies per plan)
- Insulated heating and cooling ductwork
- All air conditioning ductwork 3rd party tested by a Class 1 Energy Rater - certified to be substantially leak free
- 50 gallon gas water heater
- Energy efficient lighting per plan

### QUALITY ELECTRIC FEATURES

- Decora light switches throughout
- Decorator light fixture in foyer
- All copper wiring from panel box
- Hardwired smoke detectors with battery backup
- Prewired for ceiling fans - choice of three locations
- Arc prevention circuits in bedrooms
- GFI safety outlets in all wet areas
- GFI exterior outlets per plan

### SMART HOME PACKAGE

- Smart thermostat with Z-wave technology
- Smart entry door deadbolt with Z-wave technology
- Connected HD video doorbell
- Smart hub to connect Z-wave devices
- Structured wiring system to include three (3) combo outlets (Cat 5 phone/data and RG6 coax) locations (choice of locations)
- One wireless access point prewire



*Verandah*®

239.204.5473 | 11568 Verandah Palm Court, Fort Myers, FL 33905 | Verandah.com

Neal Communities reserves the right to make changes to this information at any time without notice. This document supersedes previously published Included Features. See Sales Representative for complete details on Included Features. ©2024 Neal Communities. CBC 1256375. [01.15.24]



# SITE PLAN

COASTAL SERIES

*Verandah*<sup>®</sup>  
IT'S DIFFERENT HERE



## CELEBRATION SERIES

Living Area: 1,778 - 2,332 sq. ft.

- 1- and 2-Story with Open Floorplans
- Great Room, Dining, and Den
- Up to 5 Bedrooms, 4 Baths
- 2-Car Garage



## COASTAL SERIES

Living Area: 2,559 - 2,908 sq. ft.

- 1- and 2-Story with Open Floorplans
- Great Room, Dining, and Den
- Up to 5 Bedrooms, 3 Baths
- 3-Car Garage



**NEAL COMMUNITIES**

Where You Live Matters

Neal Communities reserves the right to change elevations, floor plans, specifications and prices without notice. All renderings, elevations, floor plans and maps are an artist's conception, and are not intended to be an actual depiction of the buildings, fencing, walks, driveways or landscaping. All dimensions have been calculated from architectural drawings and may be subject to minor variations during construction. This insert is for informational purposes only, and should not be the sole basis of a decision to purchase any property. Please see our sales representatives with any questions. We do business in accordance with the Federal Fair Housing Law. ©Neal Communities. CBC 1256375





# SANIBEL 2

COASTAL SERIES



*Verandah*®



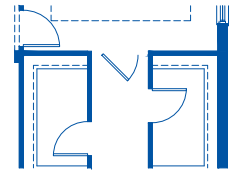
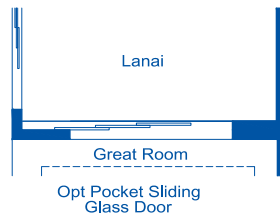
# SANIBEL 2

## COASTAL SERIES

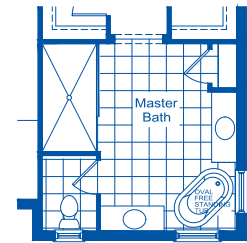
### ELEVATION S-1

3 Bed | 3 Bath | Den | Dining | Great Room | 3-Car Garage

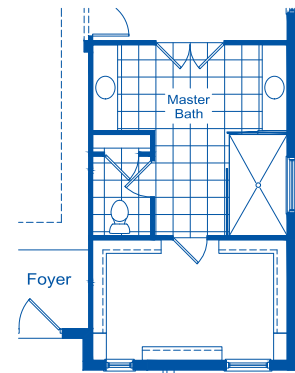
Living Area .....	2,559 SF
Garage .....	662 SF
Lanai .....	224 SF
Entry .....	243 SF
<b>Total Area .....</b>	<b>3,678 SF</b>



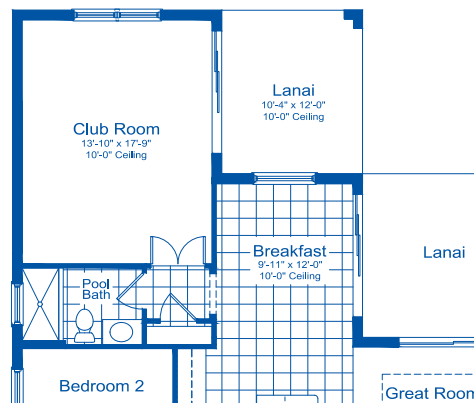
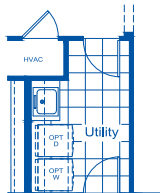
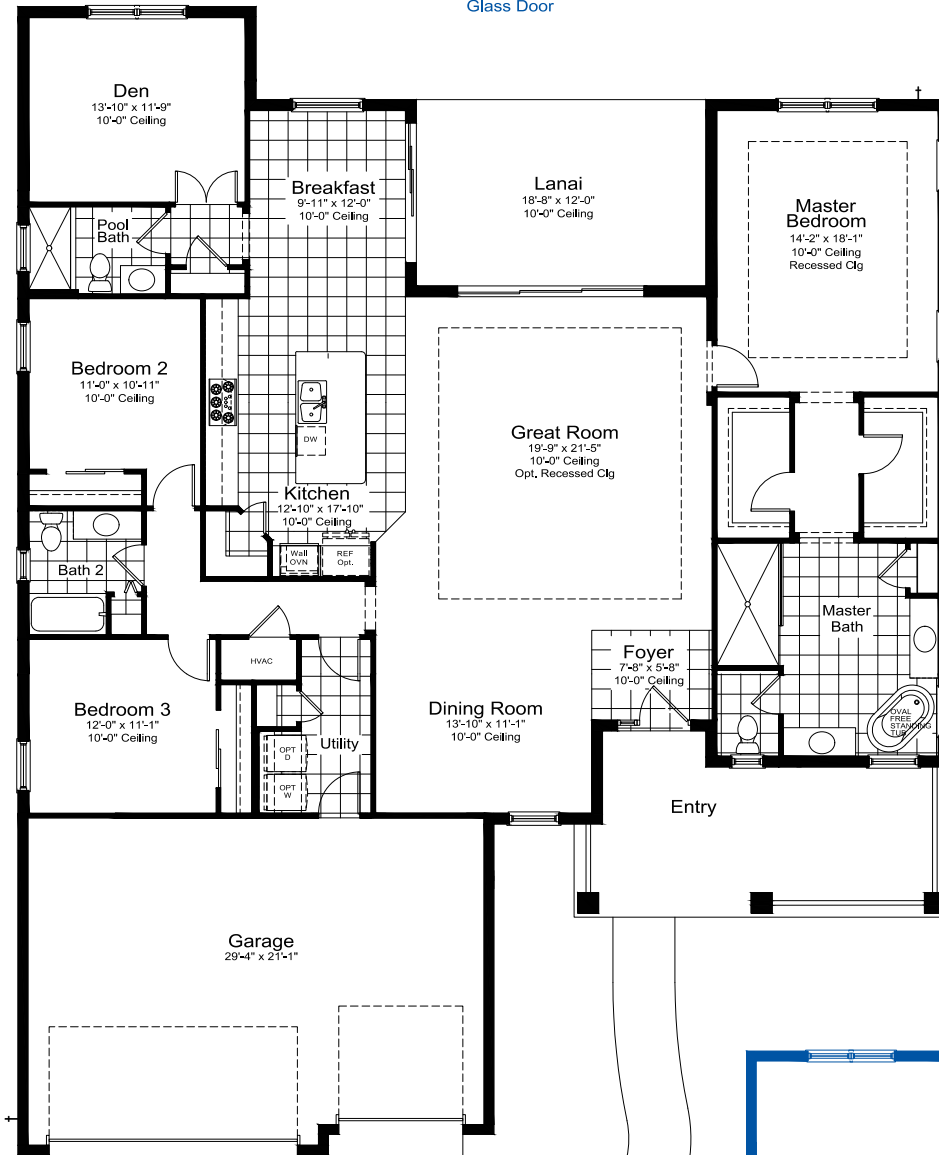
(\*\* Not Available w/ Master Bath Opt.\*\*)



Master Bath Full Glass  
Shwr Encl Option  
(\*\* Not Available w/ Master Bath Opt.\*\*)



Entry  
Opt Master Bath



LIVING	2561 S.F.
LANAI	348 S.F.



# CAPTIVA

COASTAL SERIES



FC-1



FC-2



C-1



I-2



S-1

*Verandah*®



# CAPTIVA

## COASTAL SERIES

### ELEVATION S-1

3 Bed | 3 Bath | Den | Dining | Great Room | 3-Car Garage

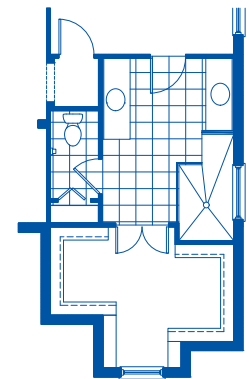
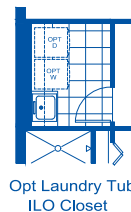
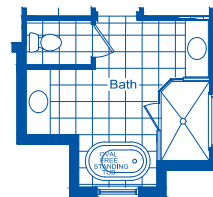
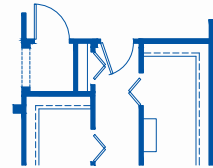
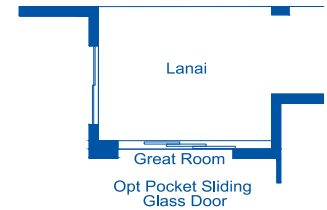
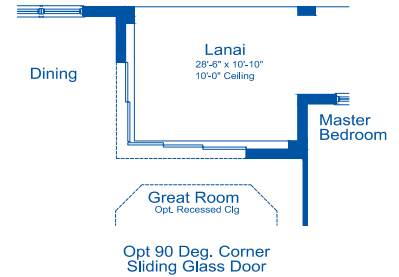
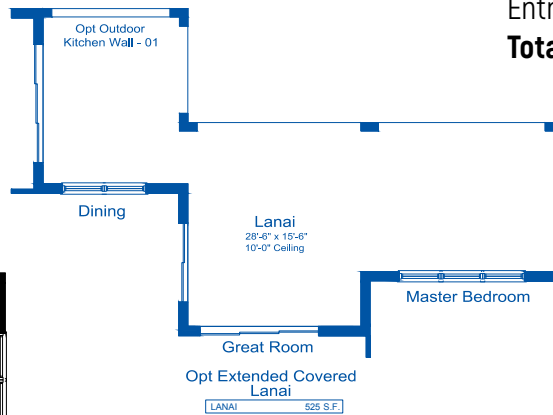
Living Area ..... 2,698 SF

Garage ..... 685 SF

Lanai ..... 245 SF

Entry ..... 206 SF

**Total Area ..... 3,834 SF**



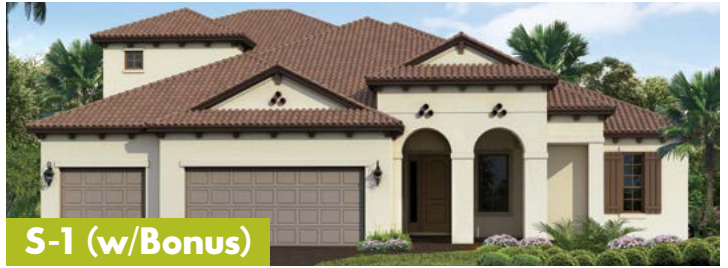


# KIAWAH 2

COASTAL SERIES



S-1



S-1 (w/Bonus)



FC-1



FC-1 (w/Bonus)



I-2



I-2 (w/Bonus)

*Verandah*®





# KIAWAH 2

## COASTAL SERIES

### ELEVATION S-1

4 Bed | 3 Bath | Den | Dining | Great Room | 3-Car Garage

Living Area .....	2,908 SF
Garage .....	684 SF
Lanai .....	523 SF
Entry .....	227 SF
<b>Total Area .....</b>	<b>4,342 SF</b>

