

CANOE CREEK  
CRUISE SERIES



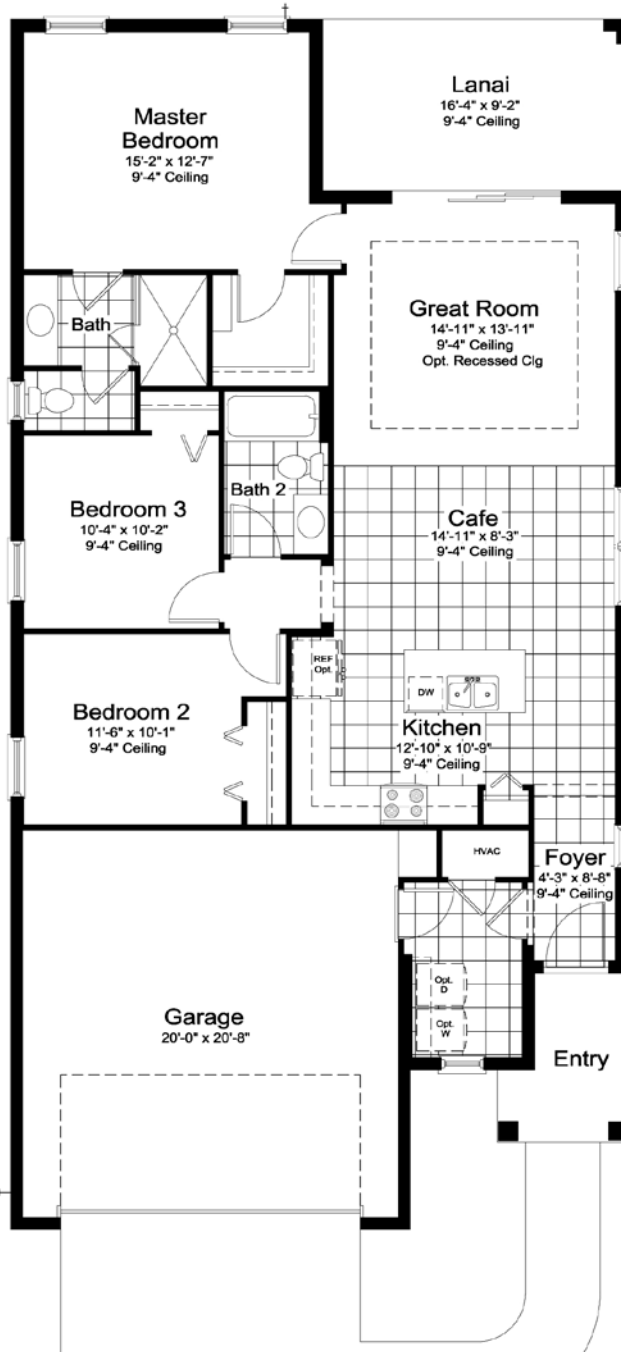
# CANOE CREEK

## AMENITIES



# THE VALIANT AT CANOE CREEK

## CRUISE SERIES



Living	1407 SF
Garage	452 SF
Lanai	150 SF
Entry	52 SF
<b>TOTAL</b>	<b>2061 SF</b>

\*Site conditions may vary. Please see sales representative for details regarding elevations and plan variations.

Brochure floorplans and elevations are representative only and may not exactly reflect the actual construction of the home you are purchasing. Please see the specific elevation selected for details that may deviate from the standard floorplan. Porches, Quoins, Shutters, Arches, Windows, Doors, Soffit Moldings, Corbels and other architectural applications are elevation specific and may not be included with the floorplan or elevation you have selected. Please see Sales Associate and Designer for explanation on the configuration of your floorplan and elevation.

# THE DREAM 2 AT CANOE CREEK

## CRUISE SERIES



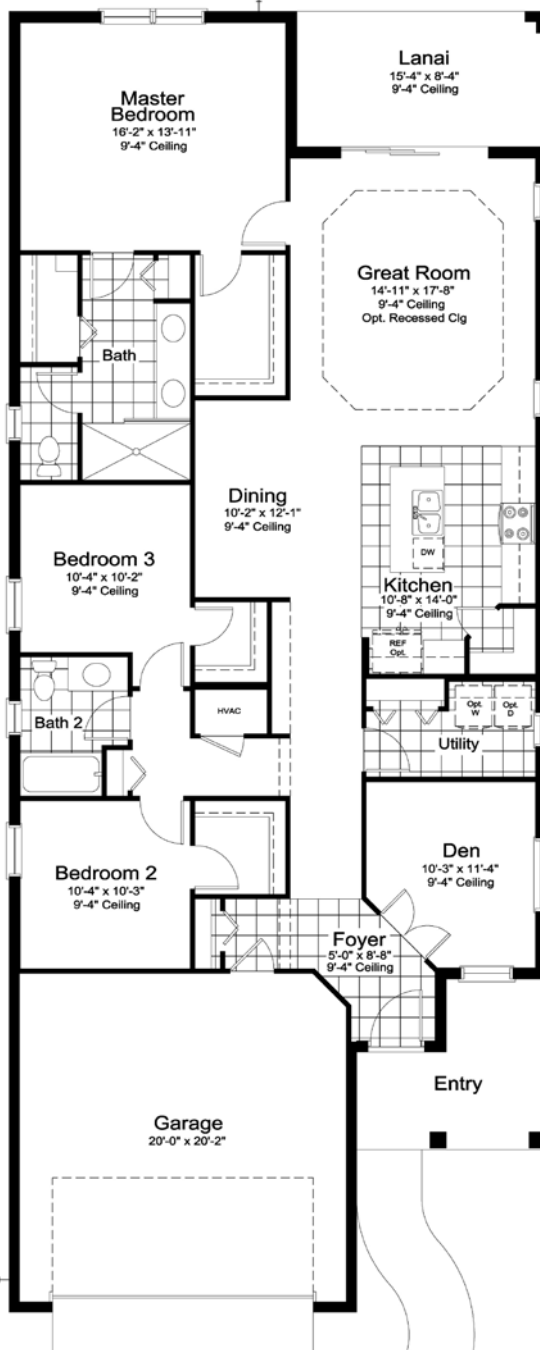
C1



FH1



C2



Living	1860 SF
Garage	438 SF
Lanai	128 SF
Entry	98 SF
<b>TOTAL</b>	<b>2524 SF</b>

\*Site conditions may vary. Please see sales representative for details regarding elevations and plan variations.

Brochure floorplans and elevations are representative only and may not exactly reflect the actual construction of the home you are purchasing. Please see the specific elevation selected for details that may deviate from the standard floorplan. Porches, Quoins, Shutters, Arches, Windows, Doors, Soffit Moldings, Corbels and other architectural applications are elevation specific and may not be included with the floorplan or elevation you have selected. Please see Sales Associate and Designer for explanation on the configuration of your floorplan and elevation.

# THE IMAGINATION 2 AT CANOE CREEK

## CRUISE SERIES



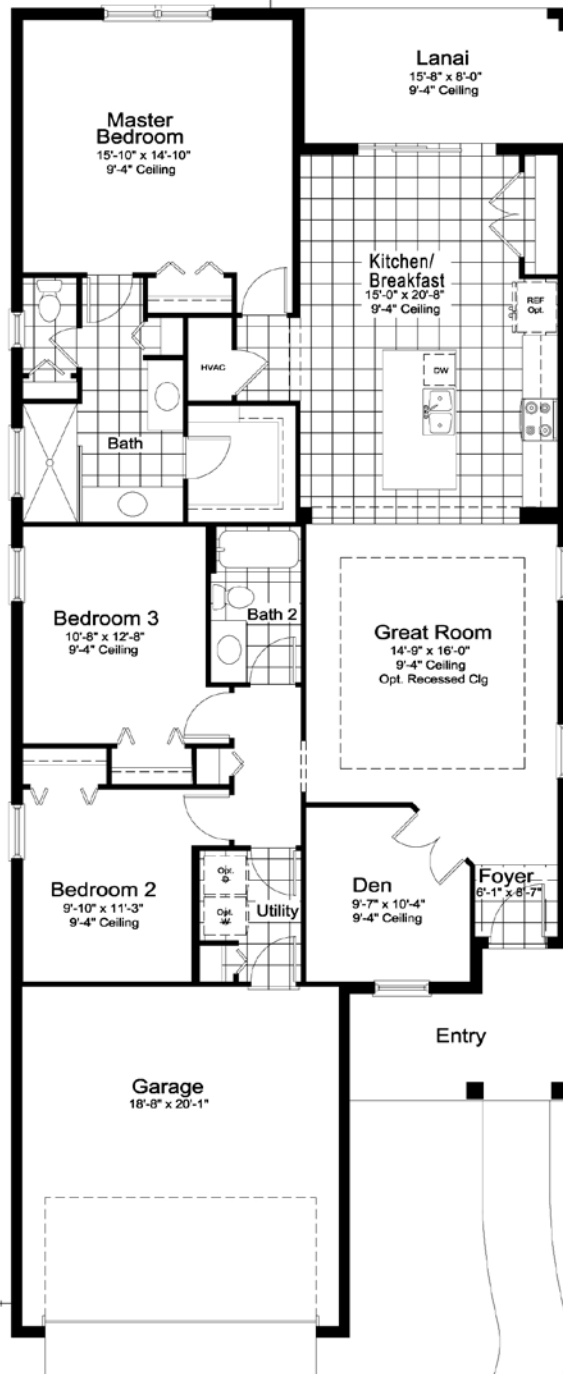
C1



FH1



C2



Living	1778 SF
Garage	415 SF
Lanai	125 SF
Entry	96 SF
<b>TOTAL</b>	<b>2414 SF</b>

\*Site conditions may vary. Please see sales representative for details regarding elevations and plan variations.

Brochure floorplans and elevations are representative only and may not exactly reflect the actual construction of the home you are purchasing. Please see the specific elevation selected for details that may deviate from the standard floorplan. Porches, Quoins, Shutters, Arches, Windows, Doors, Soffit Moldings, Corbels and other architectural applications are elevation specific and may not be included with the floorplan or elevation you have selected. Please see Sales Associate and Designer for explanation on the configuration of your floorplan and elevation.

# THE HERITAGE AT CANOE CREEK

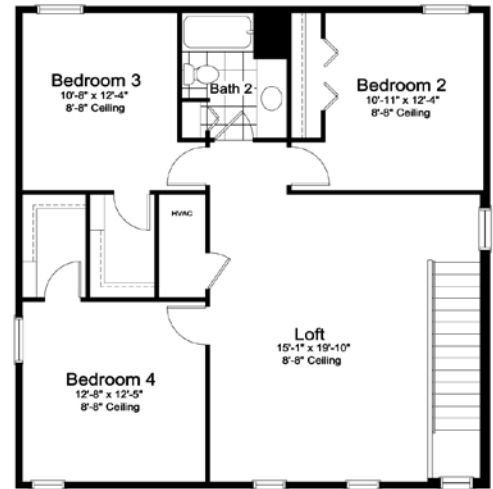
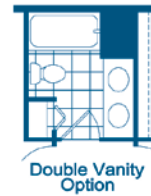
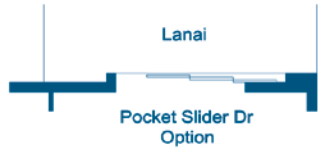
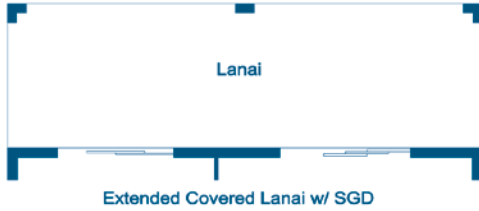
## CRUISE SERIES



C1



FH2



Upper Floor  
ELEVATION C1 & FH1

1st Floor	1386 SF
2nd Floor	1042 SF
<b>TOTAL</b>	<b>2428 SF</b>
Garage	425 SF
Lanai	190 SF
Entry	70 SF
<b>TOTAL</b>	<b>3113 SF</b>

\*Site conditions may vary. Please see sales representative for details regarding elevations and plan variations.

Brochure floorplans and elevations are representative only and may not exactly reflect the actual construction of the home you are purchasing. Please see the specific elevation selected for details that may deviate from the standard floorplan. Porches, Quoins, Shutters, Arches, Windows, Doors, Soffit Moldings, Corbels and other architectural applications are elevation specific and may not be included with the floorplan or elevation you have selected. Please see Sales Associate and Designer for explanation on the configuration of your floorplan and elevation.

# FEATURES OF CANOE CREEK

## CRUISE SERIES

### WHERE YOU LIVE MATTERS

- Over 50 years of building award-winning homes
- Over 100 successful communities and over 21,000 homes built
- Dedicated customer care team
- Personalized Neal Design Gallery selection session
- 10 year full structural warranty
- 1, 6 and 11 month warranty service inspections available
- 2 year mechanical warranty
- Highest customer care satisfaction rating

### NEIGHBORHOOD FEATURES

- Recreation center with a fitness center, pool and spa, picnic shelter with grills, 4 pickleball courts, dog park and walking trails
- Beautifully landscaped entry and streets
- The proven quality, service and integrity of Neal Communities

### AWARD-WINNING DESIGN FEATURES

- Choice of custom-designed Farm House and Coastal elevations
- Decorative architectural details and shutters per plan
- Designer -selected exterior color palettes
- Professional in-house design service
- Exterior textured wall finish with siding OR banding and accents per plan

### LUXURY FEATURES

- Orange peel walls with knock-down ceiling texture
- Classic colonial moldings
- 5-1/4" colonial baseboards
- Colonial windows in select locations
- Decorative coach light (s)
- Corian window sills per plan
- Stylish lever door hardware
- Classic arched 2-panel interior doors
- Professionally landscaped home site including mulch
- Automatic irrigation system
- Spacious closets with ventilated shelving per plan
- Plush, stain-resistant wall-to-wall carpeting in designer colors in areas per plan
- Long-lasting 17" ceramic tile floors in foyer, kitchen, baths and utility
- Air-conditioned laundry area with washer/dryer connections
- Spraycrete top-coat finish at entry and lanai

### QUALITY KITCHEN FEATURES

- General Electric stainless steel appliance package:
  - 5-year General Electric warranty (disposal not included)
  - Over-the-range microwave
  - Gas range
  - Dishwasher
  - 1/2 HP disposal
- 36" upper recessed panel wood veneer cabinets with stylish hardware
- Cabinet crown molding and bumped cabinet at microwave
- Granite countertops - choice of value colors
- Stainless steel undermount sink
- Chrome single-handle faucet
- Spacious pantry for additional storage per plan

### LUXURY BATH FEATURES

- Corian white countertops with integral sinks and eased edge in baths
- Ceramic tile walls and glass shower enclosure in master bath per plan
- Elongated white water closet
- Recessed panel wood veneer cabinets with stylish hardware
- Privacy water closet in master bath per plan
- Full-width vanity mirrors

- Chrome single lever faucets
- Water resistant drywall in all wet areas
- Towel bars and paper holders per plan
- Designer vanity lights
- White tub in guest bath
- Deco mirrored medicine cabinets per plan
- Outside vented exhaust fans in all baths

### QUALITY CONSTRUCTION FEATURES

- Professionally-engineered structural components
- Concrete block construction
- Maintenance-free soffit and fascia
- Two conveniently located exterior hose bibs
- Steel storm panels per plan
- CPVC or PEX water lines throughout
- Roof with architectural shingles
- Five-year exterior paint warranty
- Raised-panel overhead garage door with operator and remote controls, style per elevation

### SMART HOME PACKAGE

- Smart thermostat with Z-wave technology
- Smart entry door deadbolt with Z-wave technology
- Connected HD video doorbell
- Smart hub to connect Z-wave devices
- Structured wiring system including Cat6 phone/data or RG6 cable outlet (choice of five locations)
- One wireless access point prewire



### ENERGY SAVING FEATURES

- Vinyl windows with Low-E glass
- Aluminum sliding glass doors
- Natural gas piping per plan
- R-38 ceiling insulation
- Premium fiberglass insulated entry door with weather stripping
- Energy-efficient air conditioning system (SEER rating varies per plan)
- Insulated heating and cooling ductwork
- All air conditioning ductwork 3rd party tested by a Class 1 Energy Rater - certified to be substantially leak free
- 50 gallon gas water heater and electric heat pump
- Energy efficient lighting per plan

### QUALITY ELECTRIC FEATURES

- Decora light switches throughout
- Decorator light fixture in foyer
- All copper wiring from panel box
- Hardwired smoke detectors with battery backup
- Prewired for ceiling fans - choice of three locations
- GFI safety outlets in all wet areas
- GFI exterior outlets per plan



NGBS  
GREEN™  
+WELLNESS

### NEAL GREEN HOME FEATURES

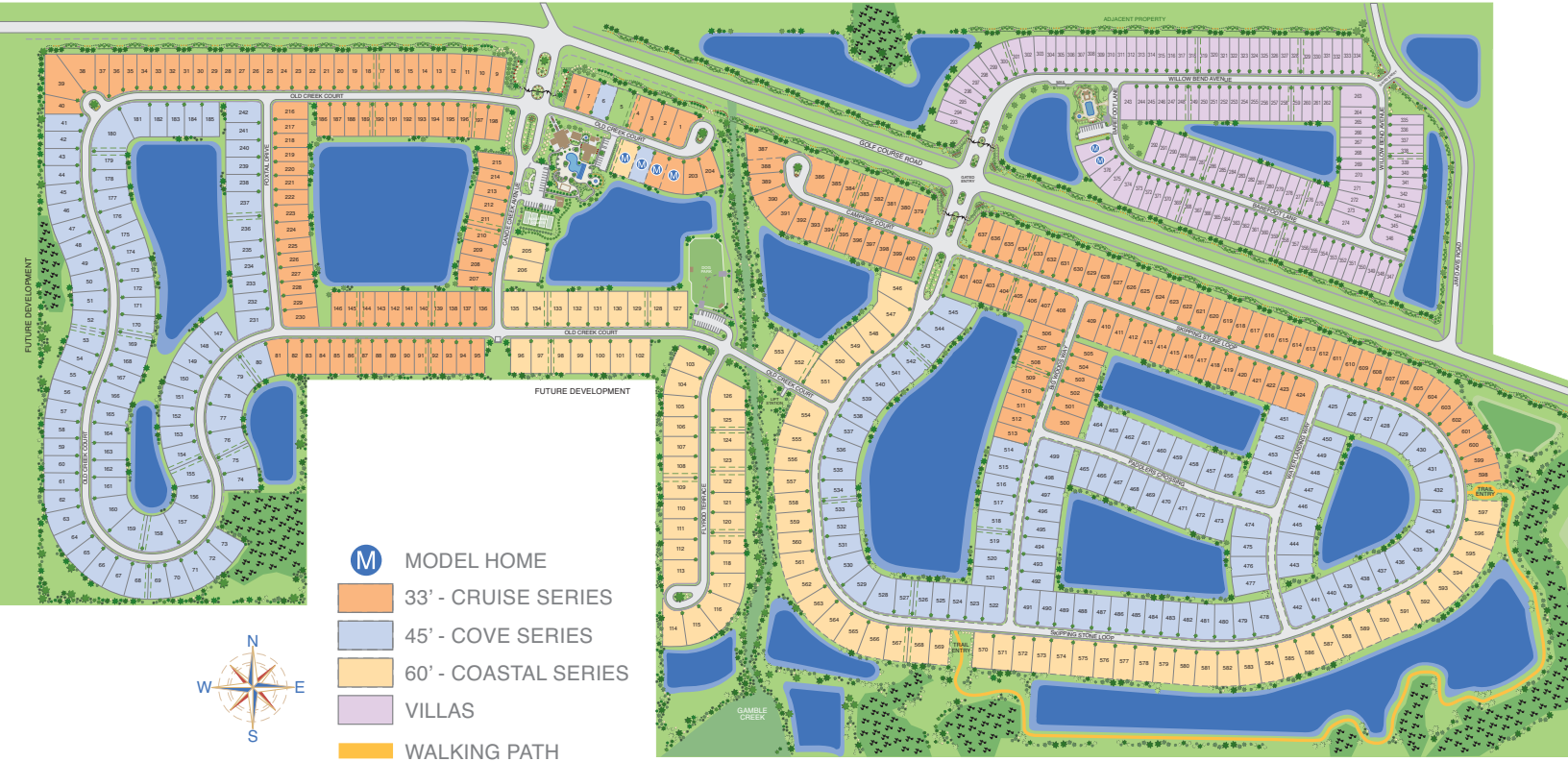
NGBS Green Certification at the Silver level and + WELLNESS certification in compliance with National Green Building Standard ICC-700\*

\*Applies to homes permitted after March 1, 2022

Neal Communities reserves the right to make changes to this information at anytime without notice. This document supercedes previously published Included Features. See Sales Representative or complete details on Included Features.

# THE SITE AT CANOE CREEK

## CRUISE SERIES



# CANOE CREEK

13427 OLD CREEK COURT, PARRISH, FLORIDA 34219

941.251.1953

CanoeCreekFL.com

This site plan is not intended as a legal description of the property or to constitute an undertaking by any party to develop the subject property exactly as shown hereon. Rather, it is for general reference only and the actual details shown hereon may vary depending upon actual field conditions and other factors. Plans to build this project as proposed are subject to change without notice.